

# Technical Ride MAPUTO MOZAMBIQUE

**Lenght : 1h**

**Cie Thomas Guérineau**

**Production manager**

**Ophélie Lemetteil / +33 6 32 33 68 52**

[compagnietg@gmail.com](mailto:compagnietg@gmail.com)

**Technical manager**

**Bartolo FILIPPONE 00 33 (0)6 63 19 66 69**

## **SCHEDULE AND TECHNICAL CREW**

**Schedule has to be adapted for each space. A pre-setting could be planned with a mutual agreement between the theatre and the company.**

### **Without Pre-setting :**

**D-Day :**

**8 hours / 1 lighting engineer and 2 lighting technicians (morning and afternoon)**

### **With Pre-setting :**

**D-Day :**

**4 hours / 1 lighting engineer and 2 lighting technicians (morning)**

**Focus time 2h**

**WRAP :**

**After the show (1h )**

**1 stage technician**

### **Standard shedule procedure:**

**9h->12h : focus lights**

**13h->16h : rehearseal**

**16h30->18h00: finishing touches**

# Technical Ride MAPUTO MOZAMBIQUE

## STAGE

Stage and trusses have to be empty, available to receive our show equipment.

Stage dimensions :

Width min : 7 m

Height min : 6 m

Length min : 7 m

- Black box italian type

- Black danse floor covering all the stage has to be put in left /right direction.  
If back /front direction put first roller in the middle.

- We need double-sided tape to lock little circle fabric under the drums (brung by the company )

- We need a real Blackout on stage and over the public (beware at too powerful emrgency exit lights)

- No ventilation nor other parasite sound

### PATTERN :

4 drums instrument ( 40 cm diameter ) + 1

We need 5 projectors (PARCAN64 , cp60 lens) set on a dimmable channel to warm skin instrument (at least 3h before the show).

Projectors as to be put on individual board for each instrument and outside the performance space on stage.

See picture as exemple of installation.

### SOUND :

Non-amplified performance

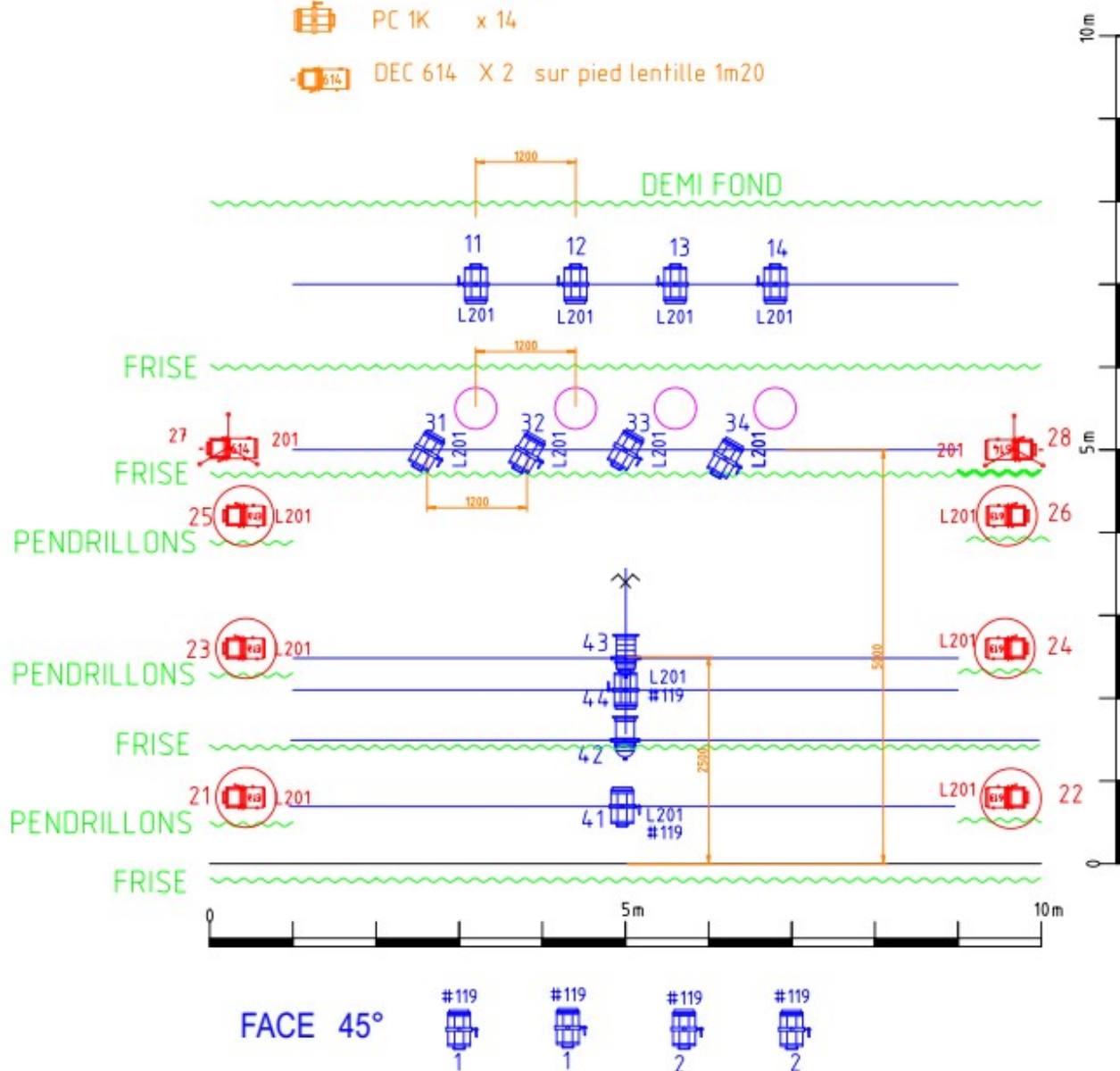


# Technical ride MAPUTO MOZAMBIQUE

## Light plot

### LEGENDE

-  Decoupe 613 x 6 (sur platines)  TAMBOUR (DECOR CIE) X 4
-  PAR64 CP62 x 1
-  PAR64 CP60 x 1
-  PC 1K x 14
-  DEC 614 X 2 sur pied lentille 1m20



MAPUTO MOZAMBIQUE

TYPE DE PLAN : IMPLANTATION

Echelle: 1/75 sur A4 unité: mm

Date: 21/11/2023

Bartolo FILIPPONE

+33663196669

bartolo.filippone@gmail.com

# **Technical ride MAPUTO MOZAMBIQUE**

## **OTHER NEEDS**

**Generous snacking (salted/sweet) for 5 people 2 hours before the show.  
More copious salted snacking needed if 2 show are plannend on the same day  
(Bread, cheese, hams, ...)  
No alcohol**

**Could be needed to leave instruments at theatre the day before the show (before 18h) and take it back the day after the show from 9am.**

**Please set a general temperature of 22°C  
Water bottles needed of 50cl capacity ( aprox 20)**

**Costumes cleaning needed (4 trousers + 4 tee shirt)**

**Before each show please announce to the public photo / video banning with or without flash with camera or cell phone and ask to switch off cell phones.**