

Technical Ride MAPUTO MOZAMBIQUE

Lenght : 1h

Cie Thomas Guérineau

Administrator

Ophélie Lemetteil / +33 6 32 33 68 52

compagnietg@gmail.com

Technical manager

Bartolo FILIPPONE / + 33 6 63 19 66 69

bartolo.filippone@gmail.com

Tour manager

Robin Lamothe / +33 6 35 31 14 72

cie.thomas.guerineau@gmail.com

SCHEDULE AND TECHNICAL CREW

Schedule has to be adapted for each space. A pre-setting could be planned with a mutual agreement between the theatre and the company.

Without Pre-setting :

D-Day :

8 hours / 1 lighting engineer and 2 lighting technicians (morning and afternoon)

With Pre-setting :

D-Day :

4 hours / 1 lighting engineer and 2 lighting technicians (morning)

Focus time 2h

WRAP :

After the show (1h)

1 stage technician

Standard shedule procedure:

9h->12h : focus lights

13h->16h : rehearseal

16h30->18h00: finishing touches

Technical Ride MAPUTO MOZAMBIQUE

STAGE

Stage and trusses have to be empty, available to receive our show equipment.

Stage dimensions :

Width min : 7 m

Height min : 6 m

Length min : 7 m

- Black box italian type

- Black dance floor covering all the stage has to be put in left /right direction.
If back /front direction put first roller in the middle.

- We need double-sided tape to lock little circle fabric under the drums (brung by the company)

- We need a real Blackout on stage and over the public (beware at too powerful emrgency exit lights)

- No ventilation nor other parasite sound

PATTERN :

4 drums instrument (40 cm diameter) + 1

We need 5 projectors (PARCAN64 , cp60 lens) set on a dimmable channel to warm skin instrument (at least 3h before the show).

Projectors as to be put on individual board for each instrument and outside the performance space on stage.

See picture as exemple of installation.

SOUND :






Non-amplified
performance

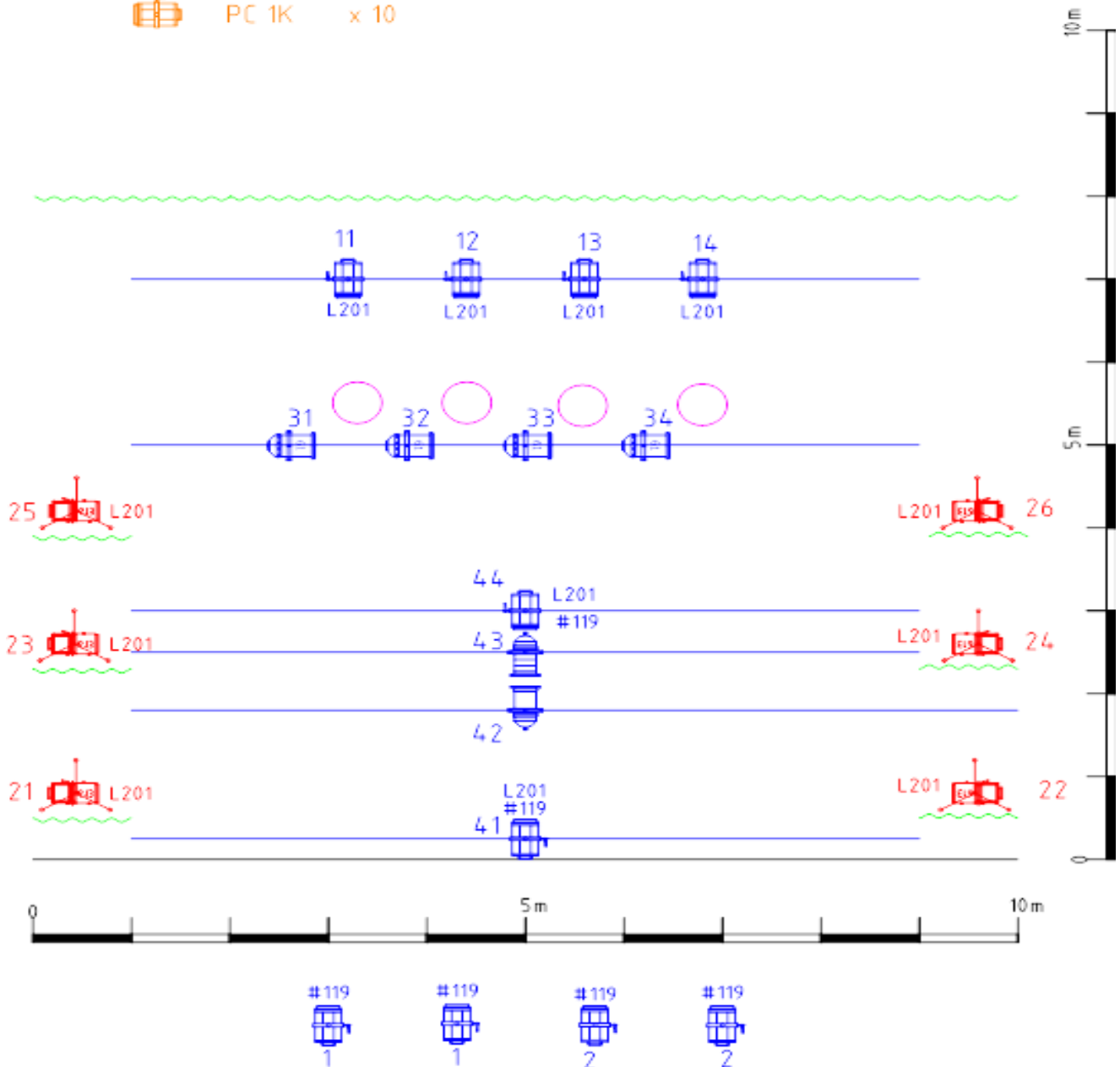


Technical Ride MAPUTO MOZAMBIQUE

LIGHTPLOT

LEGENDE

-  Decoupe 613 x 6 (sur pied hauteur 1m70)
-  PAR64 CP62 x 1
-  PAR64 CP60 x 1
-  PAR64 CP61 x 4
-  PC 1K x 10



MAPUTO MOZAMBIQUE
TYPE DE PLAN : IMPLANTATION
Echelle: 1/50 sur A4 unité: mm
Date: 15/11/2022
Bartolo FILIPPONE +33663196669 bartolo.filippone@gmail.com

Technical ride MAPUTO MOZAMBIQUE

OTHER NEEDS

**Generous snacking (salted/sweet) for 5 people 2 hours before the show.
More copious salted snacking needed if 2 show are plannend on the same day
(Bread, cheese, hams, ...)
No alcohol**

Could be needed to leave instruments at theatre the day before the show (before 18h) and take it back the day after the show from 9am.

**Please set a general temperature of 22°C
Water bottles needed of 50cl capacity (aprox 20)**

Costumes cleaning needed (4 trousers + 4 tee shirt)

Before each show please announce to the public photo / video banning with or without flash with camera or cell phone and ask to switch off cell phones.